

Deck Mounted Top Fill Sensor Soap Dispenser

PRODUCT FEATURES

- Automatically self-adjusted sensing dist. for optimum operation
- Eliminates time-consuming and labour cost in manual adjustment
- Compact design that housed in a sleek spout made of solid brass chrome casting
- Touch-free design enhances washroom image
- Attractively designed with reliable Single Direction Diverter Valve system that allows only one direction flow
- Provides consistence amount of dosage reduces total cost-in-use
- Durable housing with build-in locking mechanism
- Detachable soap bottle with easy “quick-twist” locking mechanism allows easy soap refilling

PRODUCT SPECIFICATIONS

- | | |
|-------------------------|-------------------------------------|
| • Dimension | : 173 (L) x Ø30 (W) x 124 (H) mm |
| • Material | : Polished brass with chrome finish |
| • Power Supply | : 230V AC 18V DC |
| • Sensing Distance | : 10~12cm approx. edge of spout |
| • Operating Temperature | : 4°C ~ 60°C |
| • Liquid Soap Viscosity | : <1500 CPS |
| • Soap Tank Capacity | : 1000ml |



RESOURCEFUL FEATURES:



Auto-Adjust



Single Shot Discharge



Anti-Conflict

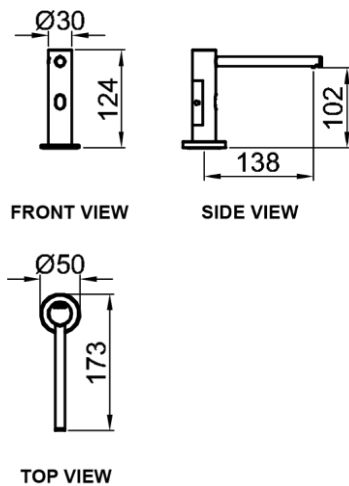


Touch-Free

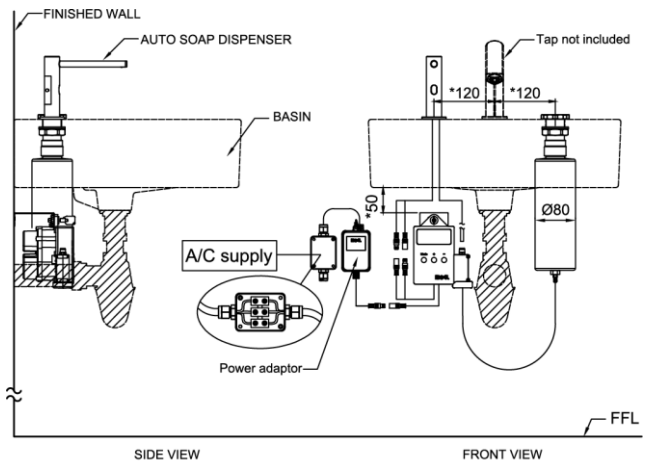


RC1000 Remote Control

TECHNICAL DRAWING



INSTALLATION DETAILS



All dimensions are in mm
*Denotes recommended value.
Date:24.10.2018