

Ambulant Urinal Grab Bar

PRODUCT SPECIFICATIONS

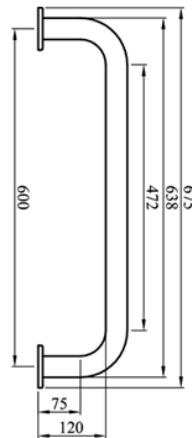
- Material : Stainless steel 304
- Loading Force : 1.3kN
- Finishing : Hairline finish
- Dimension : 600 x 120 x Ø32mm



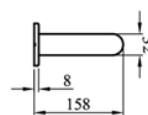
TECHNICAL DRAWING



FRONT VIEW



SIDE VIEW



TOP VIEW