

## Squat Pan

### Product Specification

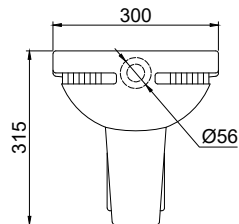
- Excellent flushing efficiency in accordance to international standard
- Ergonomically shape squat pan to yield user more room for adjustment and preventing slippage on ceramic
- Minimal-design with smooth internal curvature to aid in easy flushing

### Product Specification

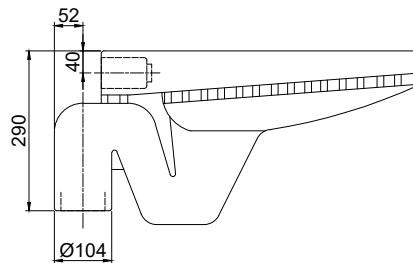
- Dimension : 665(L) x 300(W) x 315(H)mm
- Material : Vitreous China
- Flushing type : Wash down
- Water inlet : Back
- Trap seal : Min. 50mm



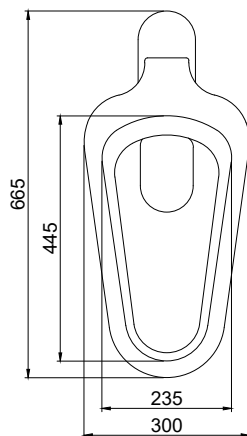
### Technical Drawing



Front view



Side view



Top view

Rev	0.1
Date	26.07.2021