

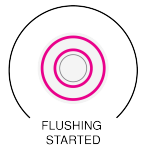
## WC Sensor Flush Valve

### PRODUCT FEATURES

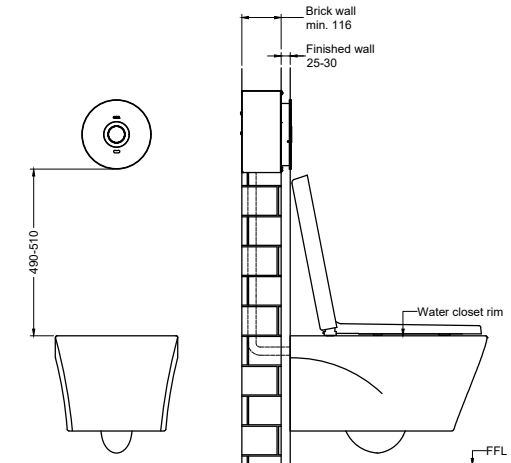
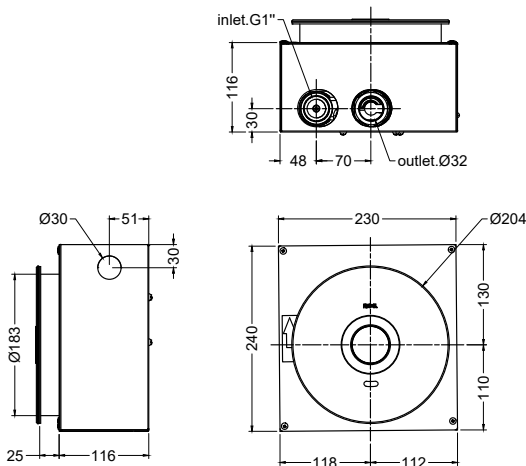
- Touch-free flushing activation for optimum personal hygiene
- Single flush operation
- Manual overriding button in case of power outage
- Colour LED indicator for different flushing stages
- Anti-corrosion, scratch resistant and anti-stain high-quality tempered glass panel

### PRODUCT SPECIFICATION

- Installation type : Concealed box  
front accessible maintenance service
- Dimension (front panel) : Dia.204mm
- Panel wall opening : Dia.183mm
- Material (front panel) : Tempered glass, black
- Material (button) : Tempered glass, black
- Material (flush valve) : Brass casting
- Power input : 220-240Vac 50/60Hz
- Sensing distance : 900mm (default)
- Detection time : 6 seconds
- Manual override : Push button
- Operating water pressure : 1.5-3 bars (dynamic)
- Discharge volume : Nominal 3.5 litres/ flush (full)



### TECHNICAL DRAWING



\*Note:

- 490-510 From bottom edge panel to water closet rim
- 700±30 From bottom edge panel to squat pan rim
- **Dimension may vary when WC bowl matches with manual / electronic bidet seat & cover**

( )Denotes recommended value  
All dimension are in mm